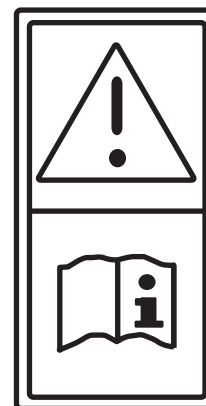
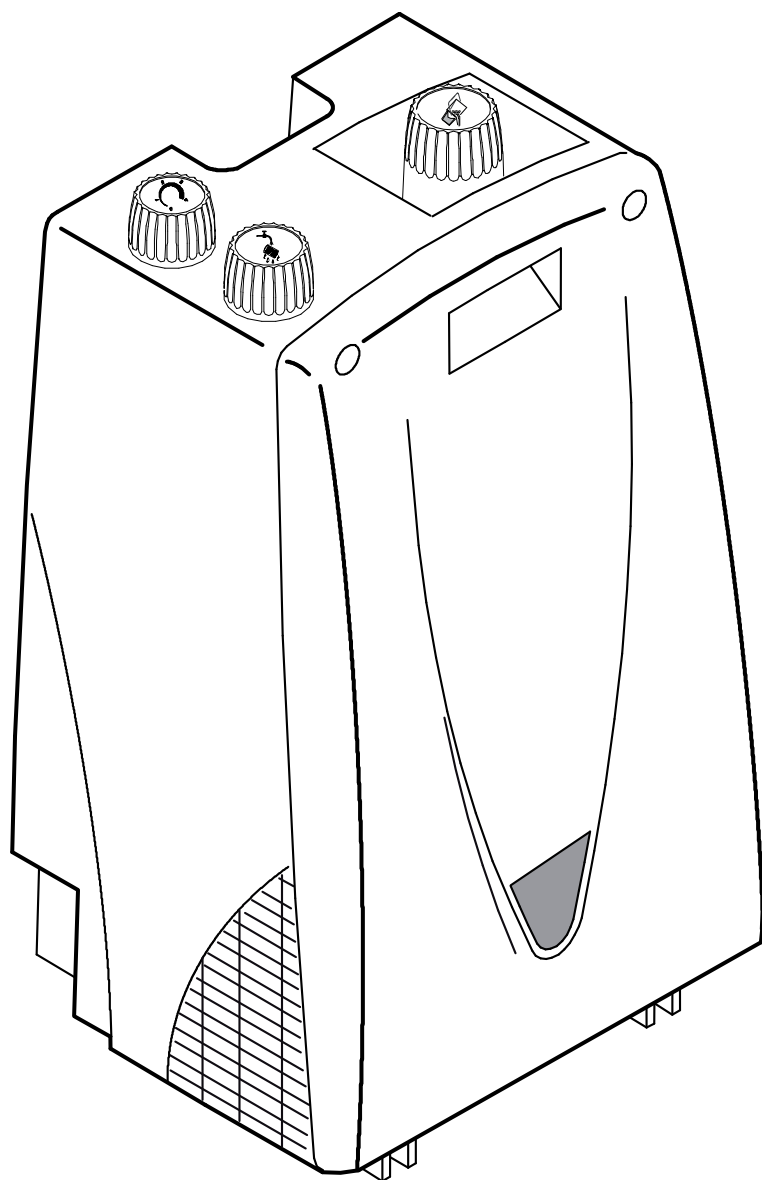


TASKI

FG 2



V013 / 12086-95 1014

Translation of the original instructions of use



ATTENTION!

Before first start-up, it is essential that you read the instructions of use and the safety notes carefully.

Keep the instructions of use in an easily accessible place so that they can be consulted at any time.

Symbols



Non-observance of this information can endanger people and / or cause severe damage!



Non-observance of this information can lead to malfunctions and property damage!



Indicates important information regarding the efficient use, non-observance of which could lead to malfunctions!

- Marks work steps that you must carry out in turn.

Intended use of machinery

The TASKI foam generator is an optional unit for single disc machines (not for the ergodisc models 175/200/238/300/400/438) that is intended for commercial use (e.g. in hotels, schools, hospitals, factories, shopping centres, offices, etc.). Under strict compliance with these Instructions for Use, it can be used for the wet and dry shampooing of textile floor coverings.

This machine has been exclusively designed for indoor use only.



Modifications to this machine that have not been authorised by Diversey will lead to the cancellation of the Safety Marks and the CE Conformity.

Any use of this machine other than its defined intended use could lead to injuries to persons and damage to the machine and the working environment.

In such cases, all guarantee and warranty claims will normally become null and void.

Content

Safety instructions	14
Translation of the original EU Declaration of Conformity	15
Overview	15
Preparation for operation/Operation	15
Recommended chemicals	15
Beginning work	16
End of operation	16
Emptying foam solution and cleaning filter / tank	16
Cleaning the sinter head	17
Service, maintenance and care	17
Malfunctions	17
Technical data	17
Accessories	17
Transport	17
Disposal	17

Safety instructions

Due to their design and construction, TASKI machines comply with health and safety requirements of the EC guidelines and therefore carry the CE sign.



Persons (including children) who are not able to use this machine safely due to their physical, sensory or mental capabilities or their inexperience or lack of knowledge may not use this machine without the supervision or instruction by a responsible person!

Children should be supervised to ensure that they do not play with the appliance.



Do not use the machine in rooms where explosive and flammable substances (e.g. petrol, thinners, heating oil, solvents, etc.) are stored or processed. The electrical or mechanical components of the machine could lead to ignition of these materials.



While operating the machine, take note of the surrounding area and pay particular attention to third parties and children!



In case of damage to parts that could affect safety, such as the tool cover, power supply cord or covers that prevent access to current-carrying parts, the operation of the machine must be stopped immediately!



Regularly check the power supply cord for tearing or aging, and do not put the machine into operation if it is not in a error-free condition!



Caution: Repairs to mechanical or electrical parts of the machine must only be undertaken by Diversey authorised customer service workshops or experts who are experienced in all relevant safety regulations.

Min. requirement for the power supply cord H05VV-F2x0.75 or SJT3x16 AWG (CAN/US).



Caution: This machine is only intended for use in dry areas, and must not be used or stored in the open air or under damp conditions.



Caution: Pay attention to the accident prevention regulations!



Caution: Only use the tools that are defined in these Instructions for Use under Accessories or that have been recommended by the TASKI specialist (Page 17), as other tools could impair the safety of the machine.



Caution: The protection of persons is based on the specific national regulations together with the information provided by the detergent manufacturer!



Caution: It is forbidden to plug in or unplug the main power supply cord with wet hands!



Caution: Ensure that the rotating brush does not come into contact with the power supply cord!



Caution: Ensure that the power supply cord is not damaged by being driven over, squashed or tearing and that it is not damaged by heat, oil or sharp objects!



Caution: Please make sure that the voltage stated on the machine label is the same as the voltage rating of the plug socket!

Should foam or liquid leak from the machine, proceed as follows:

- Switch off the machine immediately.
- Check the outlet opening and the tank cap for leakage.
- Remove the cause of the malfunction before continuing operation.

Important! Switch the machine off when you:

- e.g. carry out cleaning or maintenance work, or convert the machine to another function
- store it in a suitable room to avoid any unauthorised use of the unit
- leave it standing without supervision

Do this by pulling the power supply cord out of the mains socket.

Store the machine in a dry, dust-free room with a corrosion-free atmosphere.

The temperature must not fall below +10 °C or exceed +35 °C. Low temperatures, damp and dust can significantly reduce the service life of the electrical components.

Translation of the original EU Declaration of Conformity

We hereby declare that the product described below both in this basic design and construction and in the version marketed by us conforms to the relevant health and safety related requirements of the appropriate EU Directive.

This declaration shall cease to be valid if modifications are made to the product without our approval.

Designation: **Floor treatment, floor cleaning machine for commercial use**

Product: **Accessories for single disc machine TASKI ergodisc**
 Name: **FG2**
 Model: **FG2 (230-240VAC / 50-60Hz, 120W)**

Serial number: see rating label at the machine

Trademark:



Producer: Diversey, 9542 Münchwilen - Switzerland

Applicable EU Directives:

Directive 2006/42/EC of the European parliament and of the council of 17 May 2006 on machinery, and amending Directive 95/16/EC (recast)

Directive 2004/108/EC of the European parliament and of the council of 15 December 2004 on the approximation of the laws of the Member States relating to electromagnetic compatibility and repealing Directive 89/336/EEC

Harmonised standards applied:

EN 60 335-1-ed. 4.1/EN 60 335-2-67: 2009/
 EN 55 014-1/EN 55 014-1-A1/EN 55 014-1-A2/EN 55 014-2/EN 55 014-2-A1/
 EN 61 000-3-2/EN 61 000-3-2-A2/EN 61 000-3-3/ EN 61 000-3-3-A1/
 EN 50 366

It is ensured through internal measures that series-production units conform at all times to the requirements of current EU Directives and relevant standards.

Person authorised to compile the technical file:

Stephan Engler
 Diversey Europe B.V. Utrecht
 Zweigniederlassung Münchwilen
 CH-9542 Münchwilen

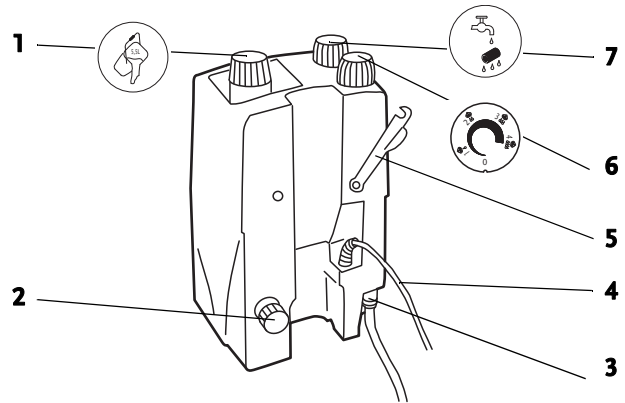
Münchwilen, 01.03.2010

Dipl. Ing. (FH) D. Windmeisser
 Technical Director
 Floor Care Equipment

Dipl. Ing. (FH) P. König
 Value Chain Director
 Floor Care Equipment

The signatories act on behalf of company management and with full power of attorney.

Overview



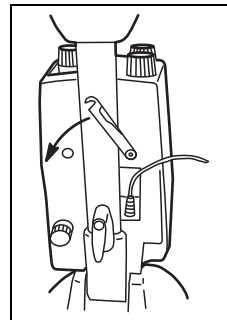
- 1 Tank cap / Dosing cup
- 2 Outlet opening / Filter
- 3 Tube with quick coupler
- 4 Power supply cord
- 5 Bolt locking attachment
- 6 Dosing control unit (on / off switch and foam quantity control unit)
- 7 Sinter head (air and shampoo solution are mixed creating foam)

Preparation for operation/Operation



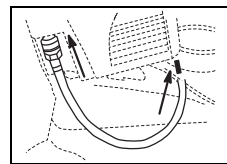
The guide pillar of the ergodisc must be in the upright position before the apparatus is mounted.

- Pull the power supply cord of the single disk machine out of the mains socket.



- Mount the apparatus onto the ergodisc and fasten it using the bolt locking attachment.

- Plug the power supply cord of the apparatus into the socket of the ergodisc, situated at the back of the handle.



- Place the end of the tube into the quick coupler by pulling back its outer ring of the quick coupling and then releasing it again.
Now the tube is fixed.
- Insert the hose over the nipple of the central water and spray inlet of the single-disk machine.

Recommended chemicals

Only use chemical products recommended by the manufacturer.

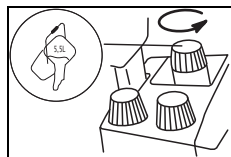
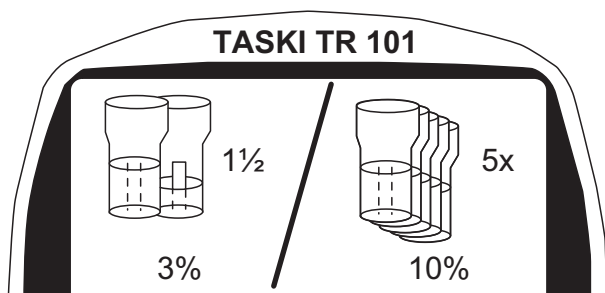


Caution:

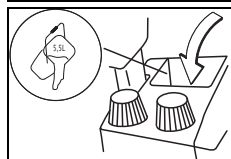
The use of other products (e.g. containing chlorine) can damage or destroy the machine.

Dosage:

Dosing examples (dosing according to product information):



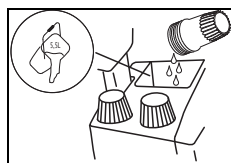
• Unscrew the tank cap / dosing cup.



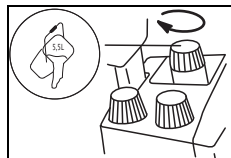
• Fill water into the tank.



Caution:
Maximum permissible water temperature 60 °C/140 °F.



• Pour the measured product from the dosing cup into the tank.



• Screw the tank cap / dosing cup back on.

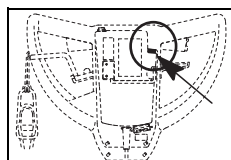
The moisture content of the foam is measured as a percentage by volume.
The switch position of the dosage control unit and the product dosage defines the amount of moisture within the foam, which affects the drying time of the carpet.

- Mount the tool as described in the ergodisc 165/175/200/238/300/400/438/ duo instructions of use.

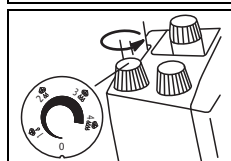
Beginning work



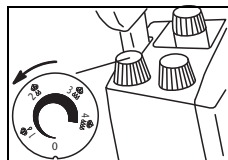
Caution:
When using the machine for the first time, we recommend practising handling it on a flat surface in a wide open area until you feel comfortable with managing the machine.



• Connect the power supply cord to the mains socket.
The display lights up.



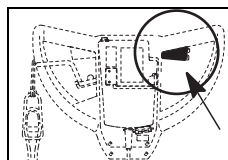
• Turn on the FG 2 by turning the dosing control unit anti-clockwise.
The foam generator will be activated.



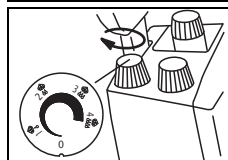
- Select the amount of foam solution with the dosing control unit (min. 1 /max. 4).
Wait until the foam appears under the brush.

- Start up the operation of the single-disk machine as described in the ergodisc 165/175/200/238/300/400/438/duo instructions of use.

End of operation



- Release the operation levers.



- Turn off the FG 2 by turning the dosing control unit clockwise.

- Pull the power supply cord out of the mains socket.



Caution:
The freshly shampooed carpet must not be walked on with outdoor shoes or shoes with leather soles.
Only use shoes with light colored soles.

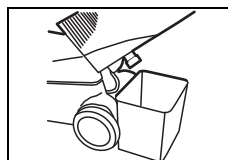
- After shampooing, use a web-brush to raise the carpet pile into place.
Allow enough time for the carpet to dry.
- After the carpet is dry, vacuum the crystallized dirt that is left..

Emptying foam solution and cleaning filter / tank

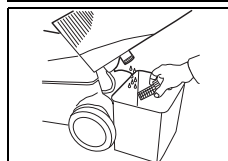
The disposal of solution must be carried out in accordance with the national regulations.



Caution:
Clogged filters reduce the flow of the cleaning solution. As a consequence you may damage the floor coating.



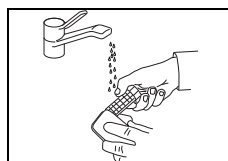
- Place a bucket under the outlet opening / filter.
Leave the machine in the working position.



- First open the tank cap / dosing cup and then the outlet opening / filter.
- Remove the filter.



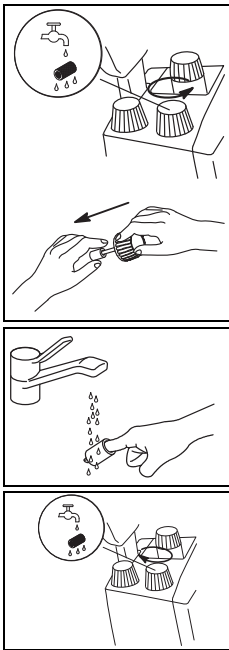
If the tank cap / dosing cup is not removed, a vacuum may form, preventing you from emptying the tank.



- Clean the filter under running water using a brush.
- Thoroughly clean the tank with water.
The filter must be removed.

- Thoroughly clean the spray unit with warm water.
If the cleaning solution dries up, it could cause blockages.
- Insert the filter back into place.

Cleaning the sinter head



- Remove the sinter head.
- Pull the sinter bushing from the sinter head.

- Clean the sinter bushing under running water after every use.
Re-attach the sinter bushing to the sinter head.

- Insert the sinter head back into place.

Cleaning the machine



Caution:

Never clean the machine with high water pressure or a water hose.

The ingress of water into the machine might cause considerable damage to mechanical or electrical parts.

- Wipe down the machine with a damp cloth.

Storage / parking of machine (machine is idle)

Never store the machine with the tank cap closed.

This allows the tank to dry out. As a result, the formation of mould and unpleasant smells can be reduced.

Service, maintenance and care



Caution:

Only TASKI branded spare parts must be used, otherwise warranties and liabilities will be omitted!

Maintenance of the machine is a pre-condition for trouble-free running and an extended service life.

Symbols:

◇ = After use, ◇◇ = Every week, ◇◇◇ = Every month, ⊗ = Service light

Activity	◇	◇◇	◇◇◇	⊗	page
Drain and clean the tank	●				16
Clean the filter and sinter bushing	●				17
Wipe down the machine with a damp cloth	●				17

Service intervals

TASKI machines are built to the highest quality standards. This is supported by internationally recognised quality control procedures. Electrical and mechanical parts are subject to wear or aging if used for long periods of time.

- In order to maintain operational reliability and availability for use, a service must be carried out after 250 working hours or at least once a year.
Shorter intervals may be necessary under rough or extreme working conditions and/or insufficient maintenance.

Service centre

Should you contact us due to a malfunction or for placing an order, please always state the type, description and the serial number of your machine.

You can find this information on the name plate of your machine, and the address of your nearest TASKI partner can be found on the last page of this manual.

Malfunctions

Malfunction	Possible causes	Troubleshooting	page
Machine does not run	Not turned on	• Turn on	16
	Power supply cord not properly plugged into the mains socket	• Check	
	Power supply cord not properly plugged into ergodisc	• Check	
	Power supply cord defect	• Call for technical assistance	
	Dosing control unit defect	• Call for technical assistance	
	Motor does not turn	• Call for technical assistance	
No foam released	Tank is empty	• Check the tank, and refill if necessary	15
	Tank cap not sealed properly	• Check	
	Filter blocked	• Clean filter	16
	Sinter bushing blocked	• Clean sinter bushing	17

Technical data

Name/model	FG 2	FG 2C	
Rated voltage	230-240V	120V	AC
Frequency	50	60	Hz
Rated power	120	110	W
Assessed sound level LPA according to EN 60704-1	62	62	dB(A)
Splash water protection	IPX4	IPX4	
Electrical protection class	II	II	

Accessories

Article		FG 2
8505010	Hand shampooing set	X

Transport

Ensure that the unit is securely fastened within the transportation vehicle.

Disposal

When it has reached the end of its operational life, the machine and its accessories must be disposed of according to the national regulations. Your TASKI partner can assist you with the proper disposal on request.